

Columbus 135SH / 145SH / 155S

SCREED, ASPHALT, AND PLASTER SANDING
OLD FLOOR SURFACE REMOVAL

Columbus

The Columbus simply and effectively removes all unwanted subfloor materials

This machine will mill, grind and sand your floor surface while creating a minimum of dust, helping to maintain a healthier working environment.

The strong design and well-built construction of the Columbus ensures long machine life and good reliability.

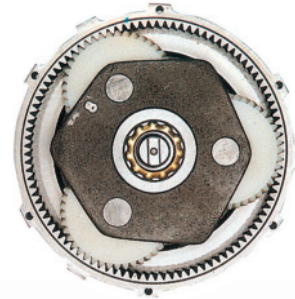
By raising and lowering the lever, the machine glides across the surface in semicircles. All types of plaster, screed, asphalt and adhesive along with small surface irregularities can be removed from the subfloor with ease.

The wide range of sanding plates make the Columbus suitable for all types of floor surfaces. The machine is unsurpassed in saving time and effort, with sanding plates, discs and brushes changeable in seconds.

The 3-gear planetary transmission is designed to cope with the toughest tasks.

Included with Model 135, 145 and 155.

Work in a nearly dust-free environment with the MULTI-VAC dust extraction ring and JANVAC 1600 dust extractor.



Pictured is the Columbus with MULTI-VAC III dust extraction ring and JANVAC 1600-H Power dust extractor.

With the Dust Extraction System MULTI-VAC in combination with a strong vacuum cleaner like the JANVAC, grinding or sanding can be done in a nearly dust-free environment.

Sanding plates and dust extractors are sold separately.

Columbus 135SH / 145SH / 155S

Model 135 SH
1200 Watts



230 V 112 455 000

Model 145 SH
1500 Watts



230 V 112 560 000

Model 155 S
2000 Watts



230 V 112 750 000

TECHNICAL SPECIFICATION

Power supply	230V or 120 V
Motor power	1200 Watt (1.5 hp)
Working width	Ø 375 mm (14 3/4")
Speed	140 rpm
Weight	38 kg (84 lbs)

TECHNICAL SPECIFICATION

Power supply	230V or 120 V
Motor power	1500 Watt (2.0 hp)
Working width	Ø 375 mm (14 3/4")
Speed	140 rpm
Weight	42 kg (93 lbs)

TECHNICAL SPECIFICATION

Power supply	230V or 120 V
Motor power	2000 Watt (2.5 hp)
Working width	Ø 375 mm (14 3/4")
Speed	140 rpm
Weight	50 kg (110lbs)

Dust Extraction System MULTI-VAC

Dust Extraction Ring MULTI-VAC I

Fits on Columbus models
135, 145, 155
loose installation



CONTENTS:
Dust ring with closure-ring,
velcro straps, 2 suction hoses
and T-adapter

Order No. 113 700 000

Spare Parts for MULTI-VAC I

Velcro Strap 38x1530mm (1 3/8"x 5')

Order No. 113 700 100

Seal with pipe ring and spring

Order No. 113 700 250

Special Equipment

Vacuum Hose Adapter Ø38/50
for connecting to JANVAC 3200/4000

Order No. 115 097 300

Dust Extraction Ring MULTI-VAC II

Fits onto SPEEDTRONIC

fix installation



CONTENTS:
Dust ring with closure-ring,
sealing sleeve, 2 suction hoses
and Y-adapter

Order No. 113 720 000

Spare parts for MULTI-VAC II

Sealing sleeve

Order No. 113 720 090

Distance sleeve
for use with the star wheel grinding plate

Order No. 113 720 095

Dust Extraction Ring MULTI-VAC III

Fits on Columbus models
135, 145, 155

fix installation



Can remain
fixed on the
machine after
initial installation.

CONTENTS:
dust ring with closure-ring,
Kevlar sealing sleeve, 2 suction hoses
and Y-adapter

Order-No.: 113 722 000

Spare Parts for MULTI-VAC III

Kevlar sealing sleeve
Can also be used on the MUTLI-VAC II if
instead of the felt sleeve a more flexible
sleeve is desired.

Order-No.: 112 880 050

Columbus 135SH / 145SH / 155S

Grinding Plates for Models 135, 145, 155 and SPEEDTRONIC

Grinding Plate with Felt

For holding sandpaper discs, also suitable for compressing adhesive on PVC/Linoleum type floor coverings.

without distance ring
 Ø 375 (14 3/4") 112 300 001

distance ring included
 Ø 375 (14 3/4") 112 300 600

Felt Plate
 Ø 375 (14 3/4") 112 300 002

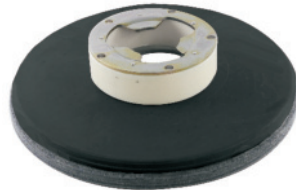
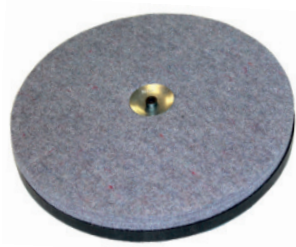
Ø 430 (16 7/8") 112 801 002

Spare Parts
 Allan Screw 112 200 003

Hex Driver 112 200 006

Disc Wheel 112 200 004

Distance Ring 112 200 005



Universal Plate

For use with sandpaper discs, sanding gauze discs and abrasive pads.

without distance ring
 Ø 375 (14 3/4") 112 334 000

distance ring included
 Ø 375 (14 3/4") 112 334 100

Rubber-coconut disc
 Ø 375 (14 3/4") 112 334 001

Ø 430 (16 7/8") 112 809 001

Pad Mounting Plate

For mounting of sanding mats, pads and grinding gauze.

without distance ring
 Ø 406 (16") 783 000 042

distance ring included
 Ø 406 (16") 783 000 440

Velcro Top
 Ø 406 (16") 783 000 043

Velcro Top (previous version)
 Ø 365 (14 1/3") 783 000 041

Ø 430 (16 7/8") Mod.165 112 807 001

Black Pad (for fixing grinding gauze)
 Ø 410 (16 1/8") 783 000 015



Grinding Plate with Rubber Surface for holding sandpaper

Ø 375 (14 3/4") 112 306 000

Spare Rubber Plate
 Ø 375 (14 3/4") 112 306 010

Ø 400 (15 3/4") 112 306 015

Spare Parts
 Strain Washer 112 306 005



Columbus 135SH / 145SH / 155S

Grinding Plates for Models 135, 145, 155 and SPEEDTRONIC

Grinding Plate

with 6 rectangular, replaceable grinding stones 75 x 90 mm (3 x 3½")
For grinding plaster and levelling compound, removing residual paint and gypsum and smoothing slight unevenness

Ø 375 (14 ¾")	
Order No.	112 332 000
Replacement stone with tapped hole	
Grit 20	161 515 003



Grinding Plate Grit 16

with 5 truncated, conical stones
For grinding screed, hard plaster, asphalt and concrete. Good grinding rate due to high area edge width of hollow conical stones. Removes unevenness, soft spots, coatings and residual filling plaster.

Ø 375 (14 ¾")	
Order No.	112 346 000
Replacement parts	
Grinding Stone, Grit 16	112 346 001



Pot Brush Plate

with 6 pot brushes
For removing the metallic layer that builds up between anhydrite and magnesite screed materials.

Also for the removal of residual foam backing, plaster splatter, residual paint coatings, adhered underlay, etc.

Ø 375 (14 ¾")	
Order No.	112 322 000

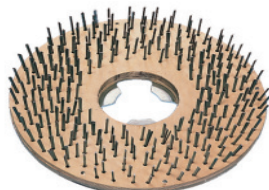
Spare pot brush	
1 piece	112 321 003



Steel Brush

Wire length 45 mm (1¾")
For removing foam backing, adhered residual underlay and carpet backing. For industrial floor cleaning.

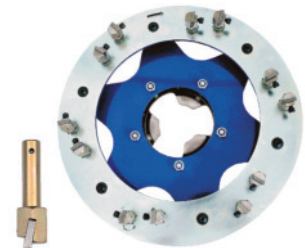
Ø 375 (14 ¾")	112 319 000
---------------	-------------



Hexa Plate with 12 Carbide hexapins

Designed with a replaceable, abrasion resistant, four-sided carbide insert for scraping and removing coatings and paints from concrete surfaces.
Ø 375 (14 ¾")

Order No.	112 355 300
Replacement parts	
Carbide Hexpin	112 355 020
Carbide Insert	112 355 050
Pin	112 355 005
Spring	112 354 006

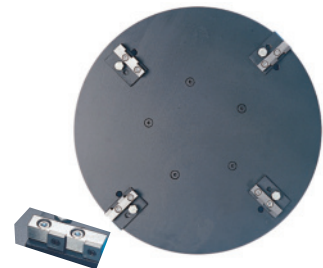


Grinding Plate

with 8 titanium-coated insets
For removing residual adhesive (also bitumen) or other adhered surface covering material. The hard metal inserts can be adjusted to make use of all four cutting edges in turn. Each insert is usable on four sides.

Ø 375 (14 ¾")	
Order No.	112 343 000

Replacement parts hardmetal insert set of 8	112 343 001
---	-------------

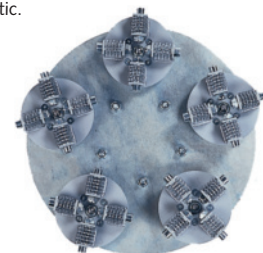


Star Wheel Grinding Plate

with 5 rotating heads, each with 20 wheels
For effective scraping, peeling and removing adhesive and various coatings, as well as thin set and mastic.

Ø 415 (16 ¼")	
Order No.	112 339 000

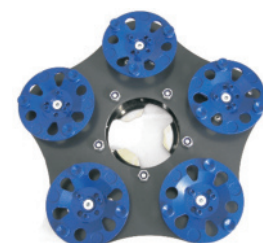
Replacement parts	
Grinding Head, complete	112 339 100
Set of 20 Grinding Wheels	112 339 110



PCD-Head Plate

with 5 ball-bearing sanding discs
For sanding of cement-bound subfloors, spackling compound, anhydrite, layers of sinter, coverings and irregularities, for example trowel marks. Very long product life

Order No.	112 391 000
Spare PCD sanding disc	
1 pcs	112 391 050



Columbus 135SH / 145SH / 155S

Grinding Plates for Models 145, 155 and SPEEDTRONIC

Hexa Plate

with 6 diamond segments

For grinding hard surfaces such as concrete or levelling compounds.

Larger area coverage makes this plate more effective than other diamond plates, especially when grinding plaster and anhydrite screed.

Ø 375 (14 3/4")

Order No. 112 353 500

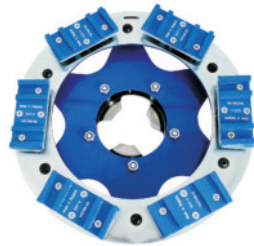
Replacement parts

Diamond segment complete with input unit

1 pcs 112 353 020

Replacement diamond segment

1 pcs 112 353 010



Abrazor Diamond Plate

with 5 diamond cups on ball bearings

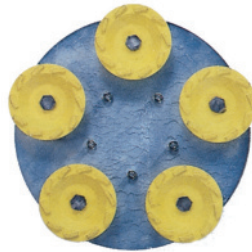
For superior grinding, sanding and bevelling on hard surfaces like concrete and coated levelling compounds. The 5 diamond cups are stabilized so that they work in unison.

Ø 415 (16 1/4")

Order No. 112 357 000

Diamond cup

(1pcs) 112 357 100



Columbus DIA-DISC Grinding Plate

with PCD inserts

Grinding of screed, removing sinter surfaces (anhydrite), adhesive residues, levelling compounds, thin coatings and painted surfaces.

complete with 5 PCD Head Segments

Order No. 112 381 000

Base plate without segments

Order No. 112 381 100

Spare Segments for DIA-DISC Plate

PCD Head Segment

Order No. 112 381 050

Diamond Sanding Segment Grit 30 - grey

Order No. 112 381 070

Diamond Sanding Segment Grit 30 - yellow

Order No. 112 381 080



Diamabrush discs are innovative sanding tools for subfloor treatment

Ensuring aggressive and constant sanding pressure with excellent results.

Diamond discs allow a very long product life and can be exchanged if necessary.

(available also for other sanding machines).

Grinding Plate K 6

with 6 diamond wings

For removing residual floor coverings and adhesives on all surfaces, also for removing varnishes on parquet surfaces.

Ø 400 (15 3/4") Grit 25

Order No. 112 388 000

Spare diamond inserts

6 pcs

Grit 25 112 388 025



Sanding Plate S 16

with 16 diamond wings

For removing and levelling of spackling compound and screed.

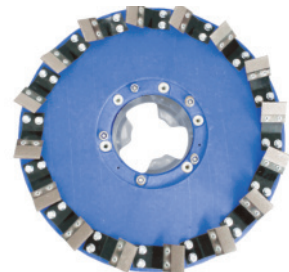
Ø 400 (15 3/4") Grit 25

Order No. 112 389 000

Spare diamond inserts

16 pcs

Grit 25 112 389 025



Diamabrush Disc

with 8 diamond wings

for angle grinders

For removing residues, adhesives and varnishes.

Ø 178 (7") Grit 25
with M14 holding fixture

Order No. 112 388 600

Spare diamond inserts

8 pcs

Grit 25 112 388 650

Adapter for Diamabrush insert

1 pcs

Order No. 112 388 620



Columbus 135SH / 145SH / 155S

Multi-Disc Shuttle III ®

with 6 satellites to hold 6 sanding or grinding plates

Get the maximum power from your sanding machine

The new Multi-Disc Shuttle can be used with 3 or 6 satellites.
(Multi-Scraper always has 6 satellites)

Reverse direction of satellites with 500 rpm
- 4 times the speed of the shuttle

Improved version: ball bearing, steel satellite discs



For Models 135, 145 and 155

Order No. 112 360 900

MULTI-PAD Satellite

for holding velcro sanding discs

Order No. 112 360 100

Spare replacement pad

Order No. 112 360 150

One-sided velcro pad, nap

Order No. 112 360 105



Velcro sanding paper Ø105 mm (4 1/8")
pack of 50

Grit 40 112 359 110

Grit 60 112 359 111

Grit 80 112 359 112

Grit 100 112 359 113

Grit 120 112 359 114

Velcro sanding paper Ø105 mm (4 1/8")
Premium quality ZIRCON

Grit 24 pack of 25 112 359 130

Grit 36 pack of 25 112 359 131

Grit 40 pack of 50 112 359 132

Grit 60 pack of 50 112 359 133

Grit 80 pack of 50 112 359 134

Grit 100 pack of 50 112 359 135

Grit 120 pack of 50 112 359 136

Velcro screen pad Ø105 mm (4 1/8")
pack of 25

Grit 80 112 359 120

Grit 100 112 359 121

Grit 120 112 359 122

Grit 150 112 359 123

Multi-Disc Satellites®

for Multi-Disc-Shuttle II + III

(six satellites per shuttle required)

MULTI-TITAN Satellite

with hard metal fragments
for grinding hard surfaces

Grit 10 112 360 200

Grit 2 112 360 250



MULTI-STAR Satellite

created to sand and remove
glue, paint and coatings

Order No. 112 360 600

Spare star-wheels (set of 12 pcs)

Order No. 112 360 650



MULTI-STONE Satellite

Ideal accessory to sand cement
foundations. Eliminates brush
marks and surplus material.

Order No. 112 360 400



MULTI-DIAMOND Satellite

With diamond segments for
sanding and roughening
of hard floors.

Order No. 112 360 300



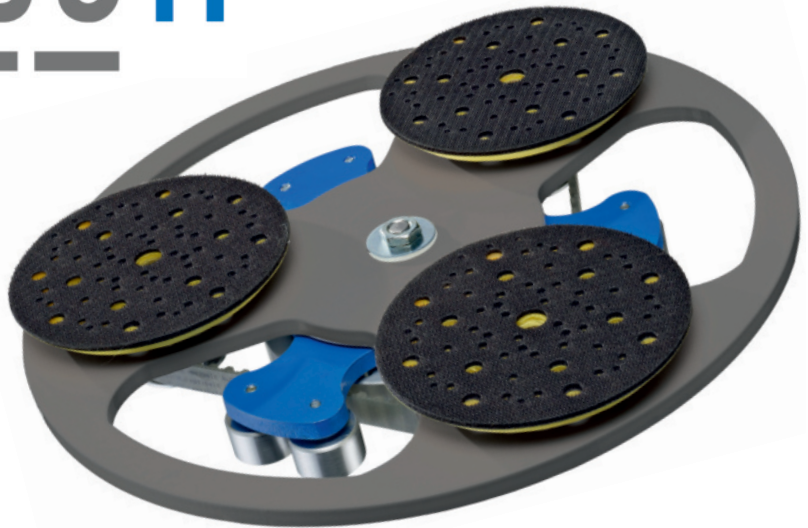
TRIVODISC II

Developing the Trivo-Disc we have consulted the best experts: our customers

Because this first class three disc sanding plate not only makes parquet flooring shine but also fulfils the highest expectations of parquet and floor layers.

The Trivo-Disc is quiet running with powerful dust extraction.

Self-propelled and quickly mounted onto the Columbus models 145 SH (1500W) , 155 and Speedtronic.



Special features

- Thanks to the self-propelled Velcro sanding discs the removal rate is very effective. The results are effectively efficient.
- Perforated Velcro sanding discs and perforated abrasives allow collection of sanding dust and optimal heat dissipation.
- Large plate apertures allow optimal suction capacity.
- Self-propelled sanding discs with low-noise toothed belt technology.
- The speed of the Velcro sanding discs can be adjusted according to surface and task (Speedtronic).
- Included in the delivery: Kevlar sealing sleeve for Multi-Vac.

The result

One revolution of the disc equals 4 revolutions of the sanding plates. The result: 600 rpm – the ideal speed for the perfect finishing touch.

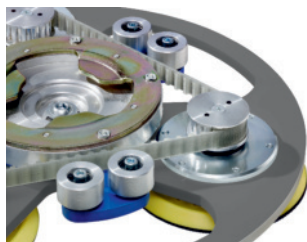
Attachments are easily changed.

1. Mounting ring, one time assembly onto chassis using 3 screws
2. V-belt disc with locking mechanism
3. Three disc plate clicks into place/locks onto drive



Less vibration thanks to V-belt technology, smooth running and less wear.

Optimal V-belt tension thanks to counter-pressure rollers.



Columbus 135SH / 145SH / 155S

Application on Columbus

Ideal torque.
Easy handling. Quiet operation.
Excellent price-performance ratio.



Dust extraction system MULTI-VAC III specially developed for Columbus machines 135-145-155

Can remain permanently attached
on the Columbus machines.

The MULTI-VAC III is especially suited
when sanding materials which release
fine and light dust particles.

Perfect in combination with the Janser
TRIVO-DISC and the multi disc shuttle
models when sanding parquet floors.
Also suited when sanding self levelling
compounds and screed.

MULTI-VAC III
dust ring with closure-ring,
Kevlar sealing sleeve,
2 suction hoses and Y-adapter

Order-No. 113 722 000

Kevlar sealing sleeve
Can also be used on the MUTLI-VAC II if
instead of the felt sleeve a more flexible
sleeve is desired.

Order-No. 112 880 050



Application on Speedtronic

Enormous sanding capacity with variable
speed control between 80 – 400 rpm.

Efficient working thanks to
optimal sanding pressure.

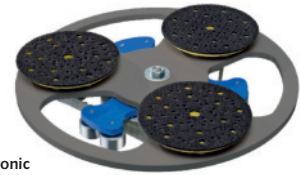
Guided on casters
guaranteeing
fatigue-free
working.



Three disc sanding plate TRIVO-DISC complete with sealing sleeve

TECHNICAL DATA	
3 support discs	Ø 150 mm (5 7/8")
Working width	400 mm (15 3/4")
Weight	7 kg (15,43 lbs)

for Columbus Mod.145 SH, 155 S and Speedtronic
Order-No. 112 882 000



for Numatic
Order-No. 112 883 000

TRIVO-DISC II Case Set

complete with
1 pc TRIVO DISC II
25 pcs Velcro sanding disc, ceramic, grit 36
50 pcs Velcro sanding disc, ceramic, grit 60
25 pcs Velcro sanding disc perforated, zirconium, grit 60
25 pcs Velcro sanding disc perforated, zirconium, grit 80
25 pcs Velcro sanding disc perforated, zirconium, grit 100
3 pcs FIBERPAD Ø 150
3 pcs soft velcro pad Ø150 mm (5 7/8"), 5mm (3/16")

for Columbus Mod.145 SH, 155 S and Speedtronic
Order-No. 112 882 900



TRIVO-DISC II in Tanos Systainer

Scope of delivery:
TRIVO-DISC II in Systainer with
special padding, Sample kit abrasives,
Product overview in cover

for Columbus Mod.145 SH, 155 S and Speedtronic
Order-No. 112 882 700



Accessories

TRIVO-DISC II case without accessories



Order-No. 112 882 800

Soft velcro pad
Ø 150 (5 7/8")
black



5 mm (3/16") 448 000 054

10 mm (3/8") 448 000 053

Velcro sanding discs Ø 150 (5 7/8")



punched high-class corundum
(Packing unit) price per pc

Grit 40 (50) 444 806 040

Grit 60 (50) 444 806 060

Grit 80 (50) 444 806 080

Grit 100 (100) 444 806 100

Grit 120 (100) 444 806 120

Velcro sanding discs
Ø 150 (5 7/8")
OXI Sand



(Packing unit) price per pc

Grit 40 (50) 444 107 040

Grit 60 (50) 444 107 060

Grit 80 (100) 444 107 080

Grit 100 (100) 444 107 100

Grit 120 (100) 444 107 120

Velcro sanding discs Ø 150 (5 7/8") CERAMIC



(Packing unit) price per pc

Grit 36 (25) 444 813 036

Grit 50 (25) 444 813 050

Grit 60 (50) 444 813 060

Velcro sanding discs
Ø 150 (5 7/8")
perforated zirconium



(Packing unit) price per pc

Grit 40 (25) 444 809 040

Grit 60 (25) 444 809 060

Grit 80 (25) 444 809 080

Grit 100 (25) 444 809 100

Columbus 135SH / 145SH / 155S

Structured, natural parquet surfaces are enjoying great popularity!
...we show you how it works.

Fine sanding with structural effect
...transforms every parquet flooring into a lively surface..

The unique FIBREPAD has been developed for fine sanding of parquet flooring and for deep cleaning of surfaces like wood, stone and metal.

Its extremely long life span means that the pad doesn't need to be changed in the middle of the work process.
The advantage is an even polishing result.

The FIBREPAD achieves through its shape and fibre structure a very high sanding performance, excellent dust extraction and finally a spotless and scratch-free surface, ready to be oiled or varnished.

The most important features at a glance:

- no scratches when sanding
- steady sanding performance – uniform polishing results
- high surface quality
- sands faster than conventional abrasives
- extremely long life span

(not suitable for intermediate varnish sanding)

The advantage for your customers:

the treated surface has a higher quality and is less delicate

FIBREPAD for TRIVO-DISC I+II

Excellent results can be achieved with the Velcro backed FIBREPAD Ø150 together with the TRIVO-DISC and Columbus machine.

The FIBREPAD Ø150 is also perfectly suited for edge sanding and can be mounted onto most edge sanders.

FIBREPAD with velcro backing

Ø 150

Order-No. 488 811 000

Ø 180

Order-No. 488 813 000

Ø 200

Order-No. 488 814 000



Three pads are required for fitting on the TRIVO-DISC.

IN 3 STEPS TO THE FINISHED SURFACE

STEP 1: Prerequisites: factory pre-sanded parquet flooring or prepared/pre-sanded in situ

STEP 2: Processing of the parquet surface with the newly developed FIBREPAD.

The FIBREPAD is ideal for the fine sanding of parquet floors and creates a light structure effect.

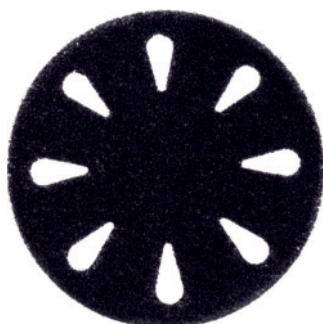
Ø 150 for TRIVO-DISC or
Ø 406 for single disc machines

STEP 3: Final treatment with oil or varnish



FIBREPAD

for single disc machines



FIBREPAD Ø 406

Order-No. 488 812 000

Pad mounting plate PIN-LOCK

Together with the FIBREPAD the newly developed pad mounting plate PIN-LOCK is recommended.

The fine bristles attach themselves firmly onto the pad which gives it a totally firm fit while working.
Suitable for all other pads as well.



Ø 406 without distance ring

Order-No. 783 000 430

PIN-Lock Ersatzauflage Ø 406

Order-No. 783 000 435



Columbus 135SH / 145SH / 155S

FOR INTENSIVE STRUCTURING

The prepared parquet surface can be additionally processed with the abrasive disc brushes before the final treatment.

For different degrees of structures in the floor surface, the brushes are available in different grits.



Disc brush SIC Ø 160 mm for TRIVO-DISCI + II with velcro backing

for Columbus 145 SH + 155 S (not for Speedtronic)

Grit 46 462 300 046

Grit 60 462 300 060

Grit 80 462 300 080

stainless steel 462 300 600



Disc brushes kit

comes in Systainer T-Loc Combi III complete with:
 3 x Disc brush SIC K46
 3 x Disc brush SIC K60
 3 x Disc brush V2A stainless steel
 3 x Fiberpad with Velcro
 1 x Grip gloves with nubs

Order-No. 462 300 000



For the assembly on the TRIVO-DISC three brushes are necessary.

Diamond Sanding Disc for TRIVO-DISCI + II

The high-performance tool for the TRIVO-DISC Plate

For effective sanding of very hard varnishes or coatings for example on wood flooring, such as 2-K Lacquer, DD- Lacquer, UV or LED Coatings.

3 pcs of the Diamond Sanding Discs are needed for a TRIVO-DISC

Diamond-Sanding Disc

Grit 30/40 blue 464 500 100

Grit 50 green 464 500 200

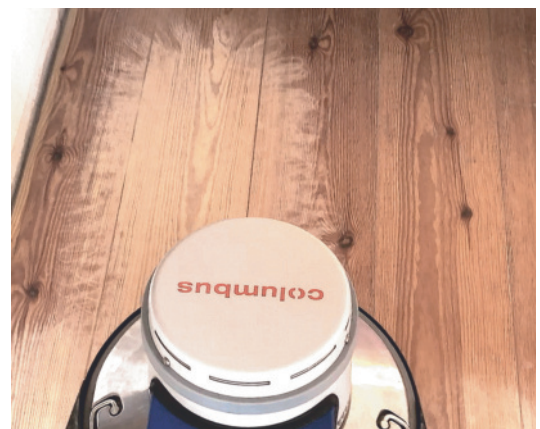
Grit 100 yellow 464 500 300

Replacement Diamond Ring incl. Intermediate Pad

Grit 30/40 blue 464 500 110

Grit 50 green 464 500 210

Grit 100 yellow 464 500 310



Columbus 135SH / 145SH / 155S

Columbus Single Disc Machine Mod.135 + 145 SH for cleaning various different floorcoverings

Mod 135 SH

without tank and shampooing brush

230 V 112 455 000

120 V 112 455 600

Mod 145 SH

without tank and shampooing brush

230 V 112 560 000

120 V 112 560 600

Tank 12 L

for Mod.135/145/155 783 000 010



TECHNICAL SPECIFICATION

Power supply	230 V or 120 V
Motor power	1200 /1500 Watt (1,5/2hp)
Working width	Ø 375 mm (14 3/4")
Speed	140 rpm
Weight	38/42 kg (84 lbs)

Picture shows Mod.135 SH
with tank and brush



Accessories for Columbus Mod 135SH+145SH

Pad mounting plate for mounting pads

Ø 406 mm (16") 783 000 042

Velcro top for pad mounting plate

Ø 406 mm (16") 783 000 043

Velcro top for pad mounting plate (previous version)

Ø 365 (14 1/3") 783 000 041



Pad mounting plate PIN-LOCK

without distance ring

Ø 406 783 000 430

PIN-Lock replacement disc

Ø 406 783 000 435



- Pad BLACK** for removing stubborn dirt
- Pad BROWN** for removing stubborn dirt
- Pad GREEN** for basic and routine cleaning
- Pad BLUE** for cleaning
- Pad RED** for routine cleaning
- Pad BEIGE** for oiling
- Pad WHITE** for polishing of lino or PVC floors and oiling

Normal pads Ø 410 (16") (thin)

Pack of 10 pcs Price per pcs

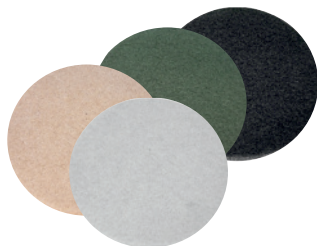
black-special 783 000 013

black 783 000 015

green 783 000 016

beige 783 000 019

white 783 000 018



Polyester pads Ø 410 (16") (thick)

Pack of 5 pcs Price per pcs

black 783 000 360

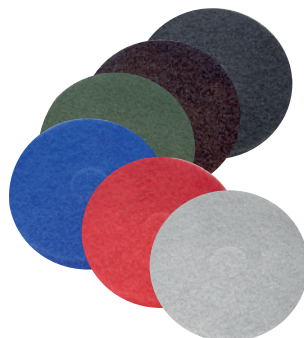
brown 783 000 370

green 783 000 350

blue 783 000 380

red 783 000 390

white 783 000 400



Ceramic brush Ø 380 mm for cleaning hard surfaces (PVC, linoleum, stone and ceramic tiles)

(comes without adapter)

Grit 320 for basic cleaning

Order No. 783 000 800

Grit 1000 for routine cleaning

Order No. 783 000 810



Adapter für ceramic brushes
(only required for first order)

Order No. 783 000 801



Scrubbing brush for cleaning hard surfaces (PVC, lino, stone)

for Mod.135/145/155 783 000 012



Polishing brush

for Mod.135/145/155 112 320 000



Shampooing brush

for Mod.135/145/155 783 000 011

